

■ USER AND GROUP ADMINISTRATION FOR LIVELINK ■

**HIGHLIGHTS**

- ▶ A familiar “Drag and Drop” Windows interface
- ▶ Displays graphical view of group hierarchy so it is much easier to follow and understand for organizations that have complex structures
- ▶ Anyone with “User Administration” privileges can easily view and manage the membership for the entire Enterprise.
- ▶ Project Coordinators can visually manage membership for their project.
- ▶ Group Leaders can visually manage membership for their groups

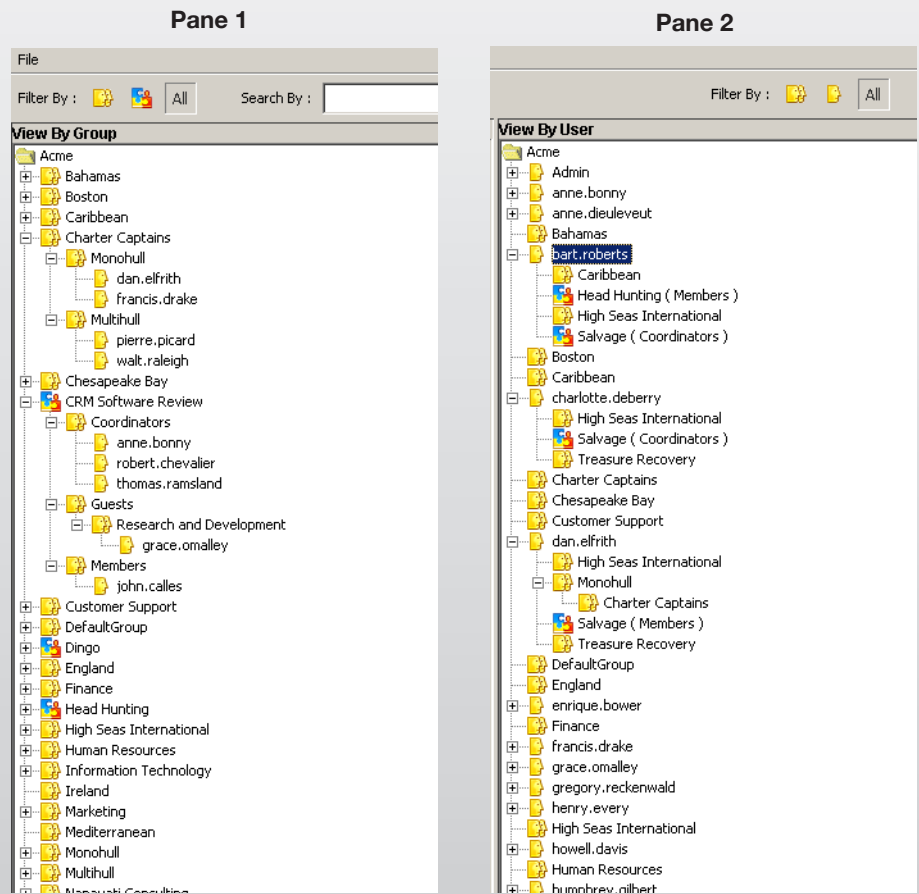
**SYSTEM REQUIREMENTS**

- ▶ Livelihood 9.2 or higher
- ▶ Apache Tomcat 4.x/5.0.x/5.5.x
- ▶ Oracle 9i / 10g or MS SQL Server 7.0 / 2000 / 2005

Do you have a large number of users, groups, and/or projects? Our User and Group Administration Tool helps manage complex Livelihood systems by giving User Administrators, Coordinators and Group Leaders a visual drag and drop interface to view and reassign group and project memberships.

**With the User and Group Administration Tool you can:**

- ▶ Easily see members of a specific Group
- ▶ Quickly see what Groups and Projects a user is a member of
- ▶ Simplify adding and removing users from Groups or Projects
- ▶ Quickly rearrange your company’s organizational structure
- ▶ Improve data security within your organization



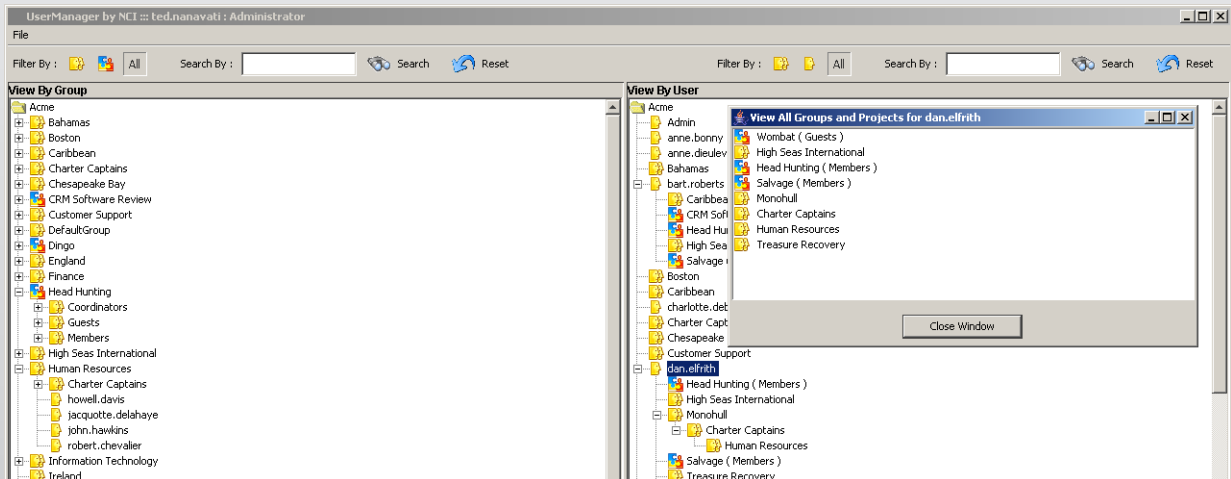
■ USER AND GROUP ADMINISTRATION FOR LIVELINK ■

**View By Group Window (Pane 1) Features:**

- ▶ List all the Groups and Projects in your Livelink Enterprise.
- ▶ Filter to display only Groups or only Projects.
- ▶ Filter Projects and Groups using Search By criteria.
- ▶ Expand groups to lowest level, including subgroups within groups down to individual users.
- ▶ List Project Roles (Coordinator, Member, Guest), and fully expand each level to include groups, subgroups within groups, down to individual users.
- ▶ Remove members from a Group or Project.
- ▶ Add members to a Group or Project by dragging a user or group from the View By Group Window or View By User Window.

**View By User Window (Pane 2) Features:**

- ▶ List all the Users and Groups in your Livelink Enterprise.
- ▶ Filter to display only Groups or only Users.
- ▶ Filter list of Users and Groups using Search By criteria.
- ▶ For each User or Group, lists the Groups or Projects that they are a direct member of. Can fully expand to see the next level of Projects or Groups and so on.
- ▶ Do a quick display showing a flat listing of all the Groups or Projects that the User or Group is a member of either directly or indirectly.
- ▶ Remove a User or Group from a Group or Project.



**COMPANY INFORMATION**

Nanavati Consulting, Inc. specializes in storing, moving, and displaying mission-critical data and documents so that you and your customers interact seamlessly. Whether the data are structured or unstructured, we help you consolidate and collaborate on information to make accurate decisions faster.

**Our consulting expertise focuses on three major areas:**

- ▶ Livelink Enterprise Content Management,
- ▶ Oracle database design, development and administration, and
- ▶ Information and System Security.