



Exceptional Data Solutions

■ GOVERNMENT GRADE PASSWORD MODULE FOR LIVELINK ■

HIGHLIGHTS

- ▶ Our password module allows System Administrators to define and configure the password parameters chosen by your company.
- ▶ Enhances your system's security by generating alerts when accounts become locked or "super user" accounts are logged in.
- ▶ Users visually see when they have met the requirements as rules change from red to green
- ▶ Users select questions which will be used to reset their password. Questions can be configured by the Administrator.
- ▶ Familiar Livelink look and feel

This could be the right tool for you if you want to...

Enhance the basic Livelink authorization scheme with a module that provides enhancements in password complexity, validity and aging. This module meets the strict password composition and password handling requirements in US Army Regulation 25-2, "Information Assurance" as well as adds some additional capabilities to provide proactive security warnings. This module also contains a "Forgot your Password?" function which allows users to reset their own password by answering questions that they set up previously.

My Password Settings

test
Friday, 11/10/2006

Personal Enterprise Tools Help

Ask Livelink a Question Enterprise Go

My Workspace My Home Workspace Users & Groups Log-out Settings Contents For This Page

Password Rules Require that New Passwords...

1. Must be a minimum of 10 characters in length
2. Must contain 2 upper case characters
3. Must contain 2 lower case characters
4. Must contain 2 numeric digits
5. Must contain 2 special characters i.e. !, @, #, \$, etc...
6. Must be different from your 10 previous passwords

General Color Discussion Workflow Password

Current Password: [password field]

New Password: [password field]

Verify Password: [password field]

Lost Password Questions and Answers:

Selecting questions and answers below will enable you to reset your password in the event that you forget your password. Answers to these questions are **case-sensitive** and should be kept **as secure as your password**.

You must select 3 questions. In the "Lost Password" interface, you will be prompted to answer all 3 questions when resetting your password.

Question One:	What are the last four digits of your social security number?
Answer One	5555
Question Two	What is your favorite sports team?
Answer Two	Revers
Question Three	Define your own question below: Where did I meet my wife?
Answer Three	[empty field]

Update Clear Form

Livelink © Version 9.5.0. Copyright © 1995-2005 Open Text Inc. All rights reserved.

SYSTEM REQUIREMENTS

- ▶ Livelink 9.2 or higher
- ▶ Apache Tomcat 5.0.x/5.5.x
- ▶ Oracle 9i / 10g or MS SQL Server 7.0 / 2000 / 2005

109 Longfellow Drive, Millersville, Maryland 21108

Phone: 410-421-5184 | Fax: 410-421-5959 | info@NanavatiConsulting.com

www.NanavatiConsulting.com

■ GOVERNMENT GRADE PASSWORD MODULE FOR LIVELINK ■

FEATURES

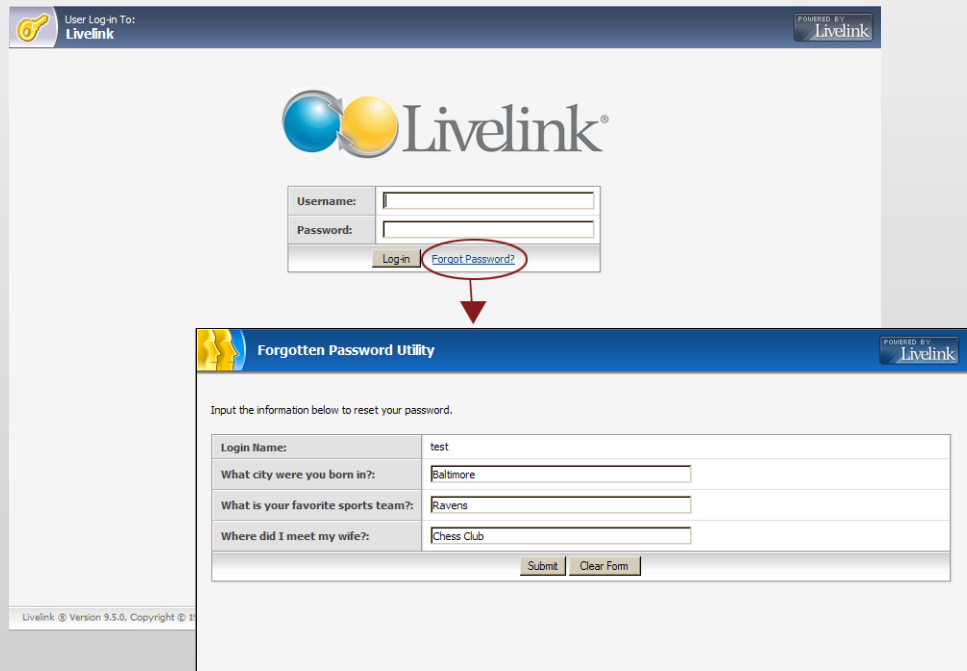
Our password module allows System Administrators to require and configure any of the following:

- ▶ Password change frequency and Password expiration
- ▶ Password length and complexity to require upper case, lower case, numbers and special characters
- ▶ Additionally, we attempt to detect social security numbers (SSNs) and birthdays.
- ▶ Password history to prevent reuse up to X number of times. You decide what number X is.
- ▶ Limit failed login attempts and set lockout behavior to either remove login privilege or wait a specified period of time.
- ▶ Generate a security alert for locked out accounts and when a super user logs in.

For Users:

▶ Highlighting the password rules and changing them from red to green allows users to see when they have satisfied a password rule. When all rules are met, the new password will display in green.

▶ If a user forgets their password, they can click “Forgot my Password” on your login screen. The questions they selected will be displayed. When they are answered correctly, a key is generated and displayed on the screen. This key is combined with additional information sent to the users email to create a temporary password. If the user successfully unlocks the account, they will be prompted to change their password. This process is fully logged in the Livelink Audit tables.



COMPANY INFORMATION

Nanavati Consulting, Inc. specializes in storing, moving, and displaying mission-critical data and documents so that you and your customers interact seamlessly. Whether the data are structured or unstructured, we help you consolidate and collaborate on information to make accurate decisions faster.

Our consulting expertise focuses on three major areas:

- ▶ Livelink Enterprise Content Management,
- ▶ Oracle database design, development and administration, and
- ▶ Information and System Security.